

DISCOVER DAYS TO REMEMBER WHEN YOU TRAVEL BY TRAIN

COVENTRY CATHEDRAL AND ST MARY'S GUILDHALL

Located in the city's historic Cathedral Quarter, St. Mary's Guildhall miraculously survived the Second World War bombing raids, and stands as a monument to the power and wealth of medieval Coventry. With magnificent interiors, collections of armour, historic furniture, artworks and internationally important tapestries, the Guildhall offers a window into Coventry's glorious past.



BELGRADE THEATRE

The Belgrade Theatre is one of the most dynamic producing theatres in the country, offering an exciting mix of entertaining and engaging live experiences. The theatre presents a broad spectrum of excellent work and produces a wide range of shows.

THE NEW ART GALLERY

Designed by Caruso St John Architects, the New Art Gallery Walsall opened in February 2000 in the heart of Walsall town centre. The renowned Garman Ryan Collection was gifted to the people of Walsall in 1973 and includes 365 important works by celebrated artists including Epstein, Van Gogh, Monet, Constable, Picasso, Matisse and Lucian Freud. The changing exhibition programmes focus on the very best in international contemporary art.



BIRMINGHAM MUSEUM AND ART GALLERY (BMAG)

First opened in 1885 in a Grade II* listed city centre landmark building, this world class museum has over 40 galleries to explore that display art, social history, archaeology and ethnography.



WOLVERHAMPTON ART GALLERY

Wolverhampton Art Gallery has won national recognition for its adventurous and entertaining temporary exhibitions and is home to one of the greatest Pop Art collections outside London. The Pop Art collection includes iconic works by Andy Warhol, Peter Blake, Roy Lichtenstein and Richard Hamilton, as well as many other artists associated with the Pop Art movement.

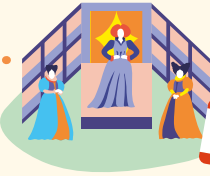


SOLIHULL TREASURE HUNT TRAIL

Why not explore Solihull on this self-guided treasure hunt themed treasure trail? As you follow the trail route solve the sneaky clues set on existing buildings, permanent features and monuments to discover the location of the buried treasure!

ROYAL SHAKESPEARE THEATRE

The Royal Shakespeare Theatre is a 1,040+ seat thrust stage theatre owned by the Royal Shakespeare Company dedicated to the English playwright and poet William Shakespeare. Situated in a Grade II listed building, which retains many of the art deco features of the 1932 Shakespeare Memorial Theatre, it re-opened in November 2010 after a three-year transformation project. The building is open daily to enjoy a meal in the Rooftop Restaurant, take a theatre tour, book a ticket to go up the tower for stunning views of Shakespeare's home town or visit the free exhibition spaces.



NATIONAL TRUST - GREYFRIARS' HOUSE AND GARDEN

This black and white timber-framed house was rescued from demolition after the Second World War and has been carefully restored and refurbished with a walled garden designed and created by the Matley-Moores. Whether you're spending the day with close friends and family, or fitting in some of that much needed time for yourself, this inner-city garden makes an ideal spot for a picnic. We welcome you to roll out your blankets, set down your baskets and make the most of this idyllic location.



SELLY MANOR MUSEUM

Step into Selly Manor Museum to discover how the Tudors cooked, dressed and lived over 500 years ago. Made up of two beautiful buildings, Selly Manor is in the heart of Bournville village in Birmingham and has a fascinating history. A museum since 1916, it has welcomed thousands of visitors who immerse themselves in its history.

IKON GALLERY

Ikon Gallery is an internationally acclaimed contemporary art venue located in Birmingham. Housed in a magnificent neo-Gothic school building, it is an educational charity and works to encourage public engagement with contemporary art through exhibitions, events and workshops.



WORCESTER CITY ART GALLERY AND MUSEUM

Worcester City Art Gallery and Museum is housed in an elegant Victorian building in the heart of Worcester. The beautiful interior is a warm and friendly place with lots of amazing things to see including dinosaur footprints, Worcestershire Sauce archive, a real Roman mosaic and a Native American totem pole!



BIRMINGHAM HIPPODROME

Birmingham Hippodrome is the UK's most popular single auditorium theatre, offering a mixed programme of nearly 400 performances, featuring touring musicals, opera, drama and comedy, international dance and the world's biggest Pantomime. The Hippodrome is also home to Birmingham Royal Ballet, one of the world's best classical ballet companies.



SHREWSBURY MUSEUM AND ART GALLERY

Visit the newly restored Shrewsbury Museum and Art Gallery and discover 650 million years of history and objects alongside brand new extraordinary contemporary art, all displayed within a Victorian concert hall and medieval house.

THE BARBER INSTITUTE OF FINE ARTS

Featuring many of the greatest names in Western art, the Barber holds one of the most outstanding and internationally significant collections assembled in Britain during the 20th century. The Barber is also home to more than 800 drawings and prints, a fine collection of sculpture – including works by Degas and Roubiliac – decorative art and portrait miniatures. In addition, the Barber also has one of the finest collections of Roman, Byzantine and Medieval coins in the world.

For more information regarding opening times and pre-booking requirements, visit [makeitwm.com/adventures-by-train](https://www.makeitwm.com/adventures-by-train)



2 for 1 on hot drinks when you travel by train!
Visit nationaltrust.org.uk/greyfriars-house-and-garden/features/tandcs
T&Cs apply

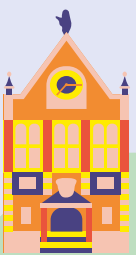
If you're looking to go a little further afield why not visit Dudley Zoological Gardens and Castle, home to some of the world's rarest and most exotic animals, the Black Country Living Museum where you can wander round the open-air museum visiting original shops and houses or a visit to Dudley Canal Trust where you experience over 420 million years in 45 minutes!



Find out about the great range of 2-for-1 offers available across the West Midlands when you travel by train. From boat trips along the River Avon to the beautiful Winterbourne Gardens in leafy Edgbaston or how about a visit to the award-winning Black Country Living Museum? There really is something for everybody when you travel by train. For more information:

wmr.uk/2for1

Uncover the region's culture by train



It's quick and easy to explore the region by train



Deciding which ticket is right for you?



Download the free West Midlands Railway App today

Let West Midlands Railway help you explore the whole West Midlands region.

Head over to wmr.uk and search your journey, it's the simplest way to find out which ticket is perfect for you and your family day out.

Choosing to travel off-peak means that you will miss the hustle and bustle of rush hour, you'll get to sit back and relax as your wonderful day out starts with the train journey.

Find out more online. wmr.uk/2for1

It'll make your train-travelling life much easier. Buy tickets, check train times and even turn your phone into the ticket itself – all with the tap of a finger. All with no booking fees.

